

MM-286-01

## Warning lights



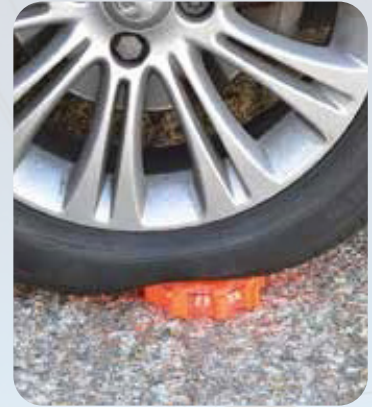
### Pulsar Kit 5 pcs rechargeable RED

Includes carrying case/charging station & car charger

Part.no. 9850750

#### Technical Specifications

Light source:	LED
Color:	Red
Function:	Flashing
Visibility:	At least 1 km
Performance:	7 cd
Operating time:	Up to 60 hours
Battery:	Rechargeable Li-Ion
Charging time:	10 hours
Operating temperature:	-40°C to +60°C
Dimensions:	ø110x24mm
Weight:	200g



PULSAR-PRO is designed with safety in mind for traffic control, signaling, attention, boundary markings, and vehicle safety. These rechargeable multifunction lights are small but robust and are made of an impact-resistant plastic casing that is waterproof down to 10 meters (IP67). They are practically indestructible and can withstand being run over by most vehicles. The built-in magnetic mounts make it easy to attach them to vehicles or other metal surfaces.

Ideal for professional applications, including first responders, police, fire departments, and highway traffic. The device has a memory function – it starts in the last used setting.



### Pulsar RED

Includes battery (3xAAA)

Art.no. 985089

#### Technical Specifications

Light source:	LED
Color:	Red
Function:	Flashing
Visibility:	At least 1 km
Performance:	7 cd
Operating time:	Up to 240 hours
Battery:	3xAAA
Operating temperature:	-40°C to +60°C
Dimensions:	ø110x24mm
Weight:	200g



PULSAR-AAA is a multifunction (10 light modes) LED warning puck in a shock- and crush-resistant housing that can withstand weights of up to 1 ton. These compact warning lights are designed for hazard awareness or signaling. They are extremely robust, waterproof, and magnetic, allowing them to be attached to vehicles or other metal surfaces. They can operate for up to 240 hours depending on the selected light mode. The individual warning lights are ideal for emergencies such as road hazards, air traffic control, vehicle breakdowns, etc., providing strong illumination to alert the surroundings of their presence.

They are also perfect for use in industrial and public utility sectors, as well as anywhere a powerful warning light is necessary to draw attention. The device has a memory function, starting in the last used setting.